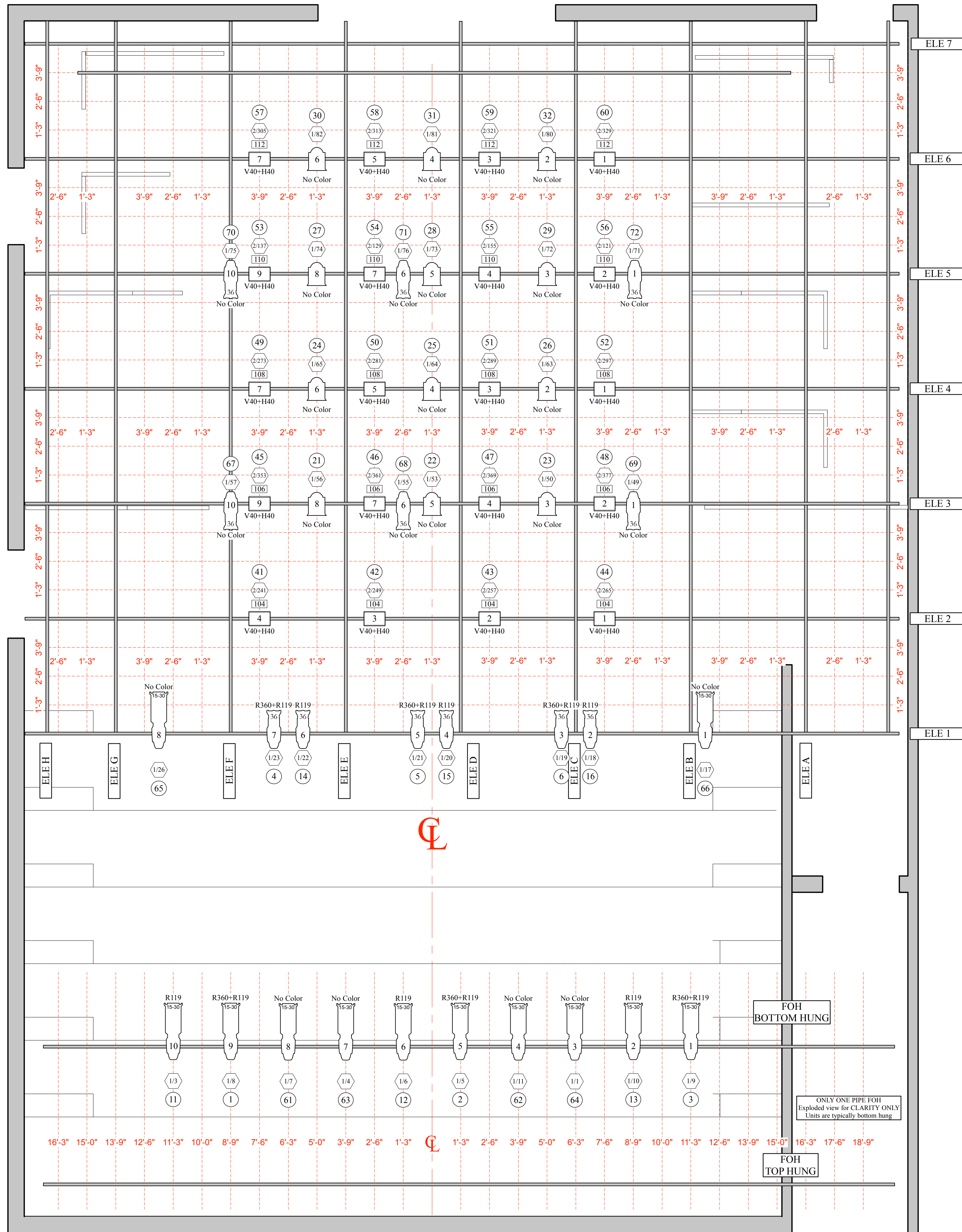
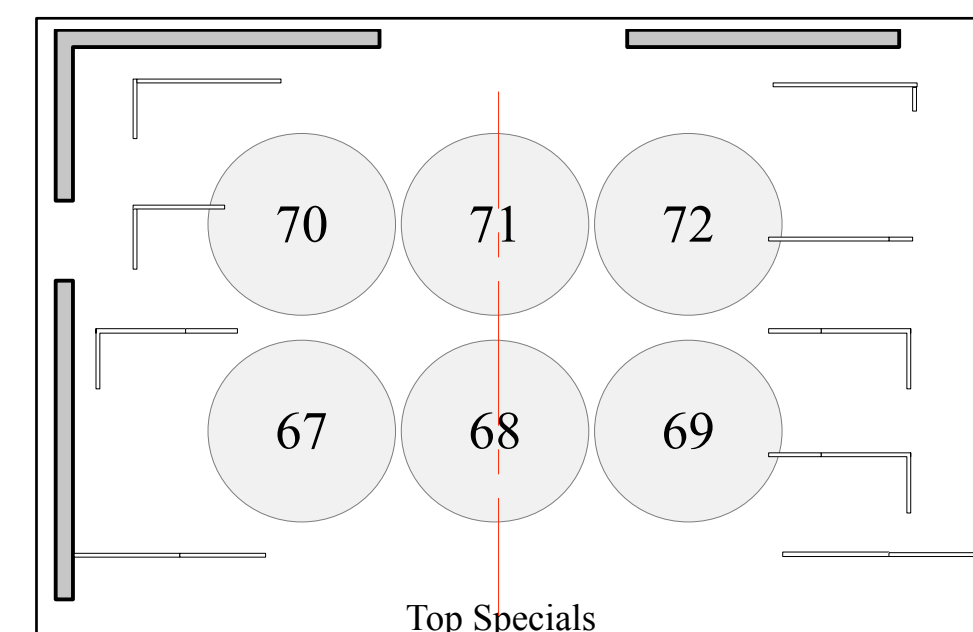
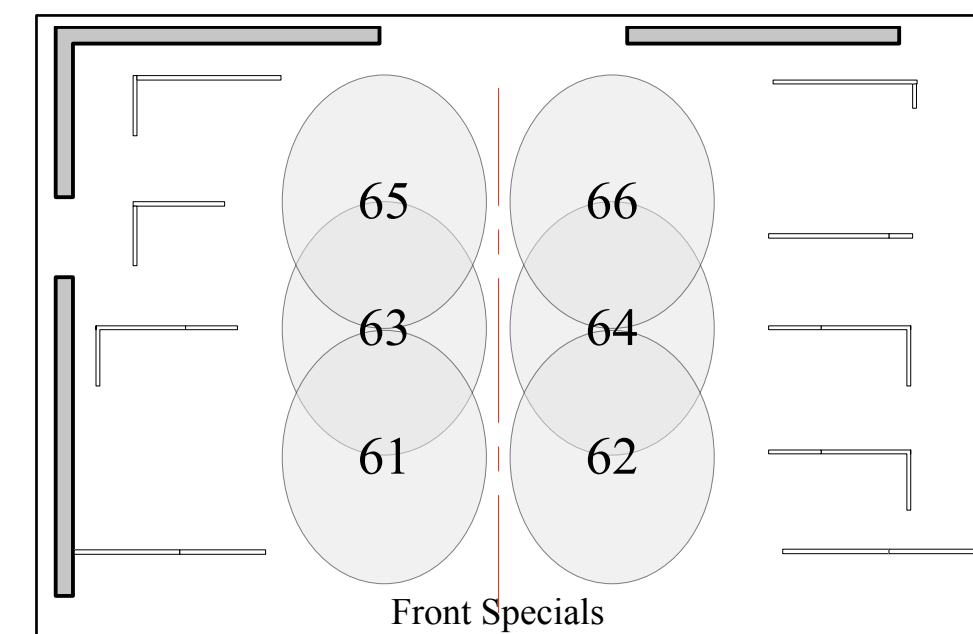
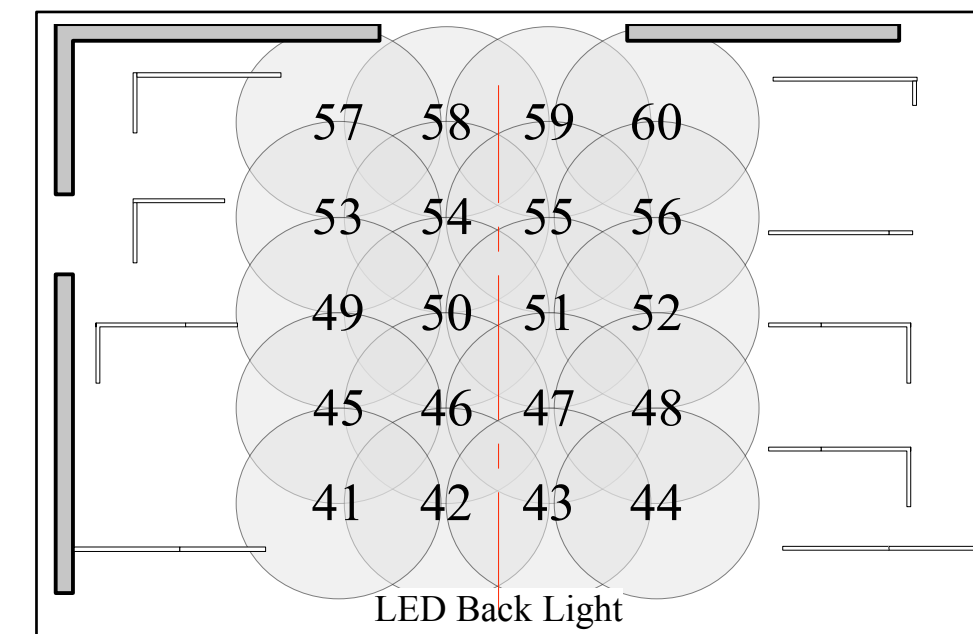
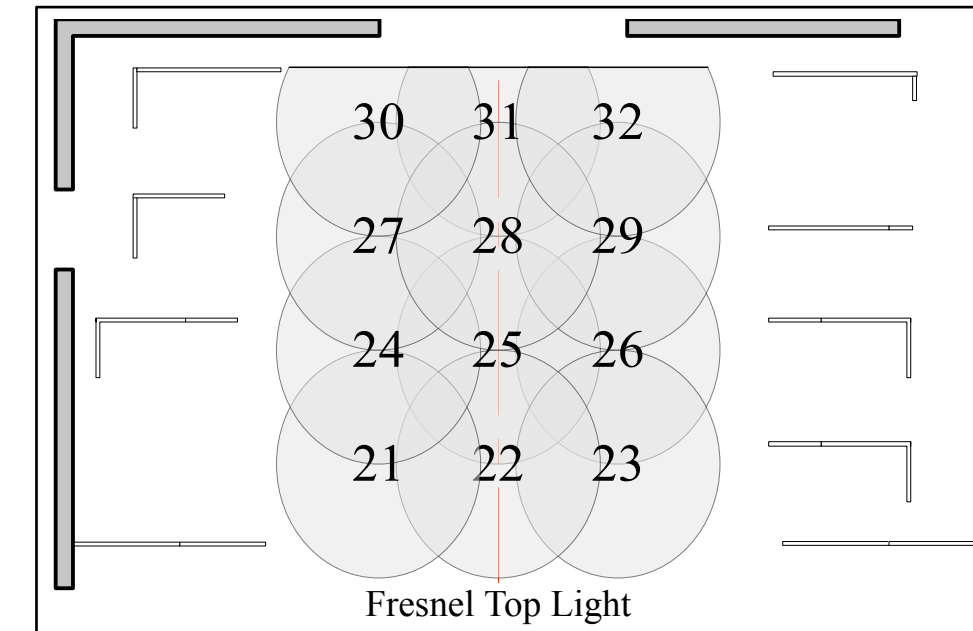
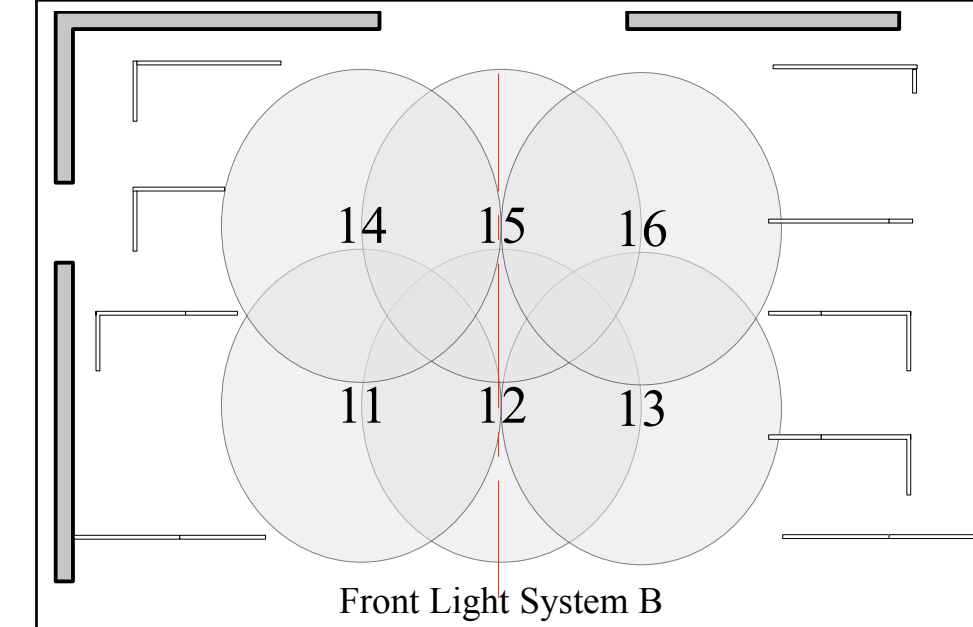
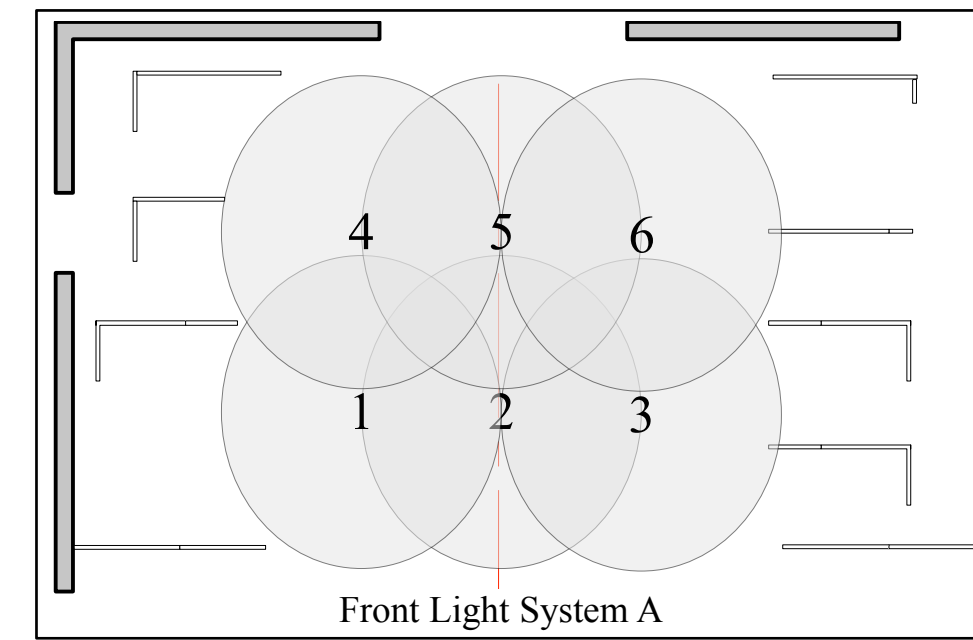


Light Plot



Focus Charts



Show Notes:

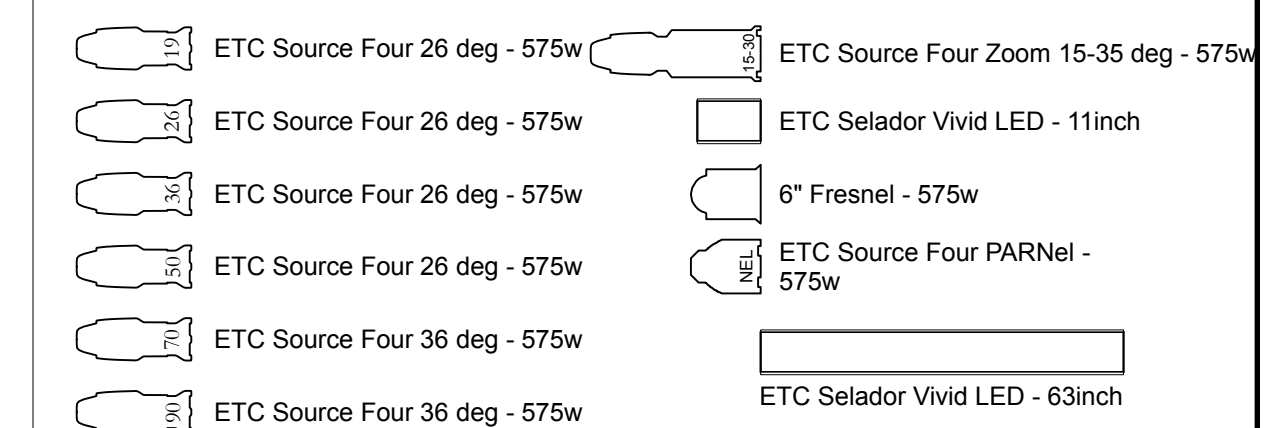
Rep Notes:

- Control provide by house ETC Ion 1000
- One 2x20 Fader Wing detached is provided.
- Three ETC 2port DMX Nodes provided.*
- *LED Dwn Light utilizes two ports of six total ports
- Stage Right/Stage Left Pipe Trim = 21'-2" Tabled Numerically
- Upstage/Downstage Pipe Trim = 21'-4" Labeled Alphabetical
- All fixtures must be returned to rep focus during strike.
- All fixtures must receive safety cable.
- All barnstorms must have a safety to fixture.
- Circuit Plot available upon request
- Dimmable Circuits
 - 12 Circuits FOH - 72 Circuits Overstage - 6 Circuits Stage Level
- Non-Dim Circuits
 - 1 Circuit FOH - 11 Circuits Overstage - 3 Circuits Stage Level
- Dimmable Circuits 1-90 - Non-Dim Circuits = 101-115
- FOH Bottom and Top Pipe are the same FOH Top are simply top hung. FOH Top Pipe is drawn in correct position.
- FOH Pipe can support no more than 30lbs per foot. DO NOT OVERLOAD
- Additional Pipe available upon request.

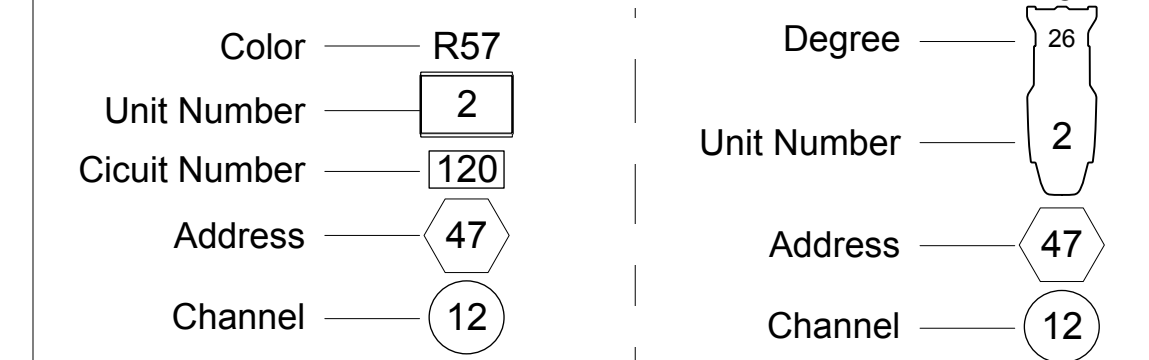
Macros & Subs:

- Macro 1 = LED Power On
- Macro 6 = LED Power Off
- Sub 1 = Front A
- Sub 2 = Front B
- Sub 3 = Top
- Sub 4 = LED
- Sub 5 = Specials
- Sub 10 = House

Lighting Key:



Legend:



This drawing represents design intent and concept only. All designs, drawings, specifications & copies furnished within are the property of NCSU and may be used for this production only. It shall not be reproduced, re-created, nor disclosed to others without consent. NCSU reserves the right to withdraw the use of this design for current and/or future productions. The designer is responsible for the visual aspects of the production only. It is understood that all applications relate solely to the appearance of the design and not to matters of safety or structural suitability. The implementation of the design must comply with all applicable federal and local safety and fire codes. The designer is not qualified to determine electrical or structural appropriateness for the design and will not assume responsibility for damages resulting from improper engineering and/or implementation of this design. The designer agrees to make alterations to any specifications found to be incompatible with proper safety precautions.

University Theatre
Studio Rep
Light Plot

Design by: Joshua Reaves | Venue: Kennedy-Malwee Studio

Scale: 3/8" = 1'-00" | Print date: 8/27/15

Plate 1 | Rev. 5 | File Name: Studio Rep Plot 8-25-2015